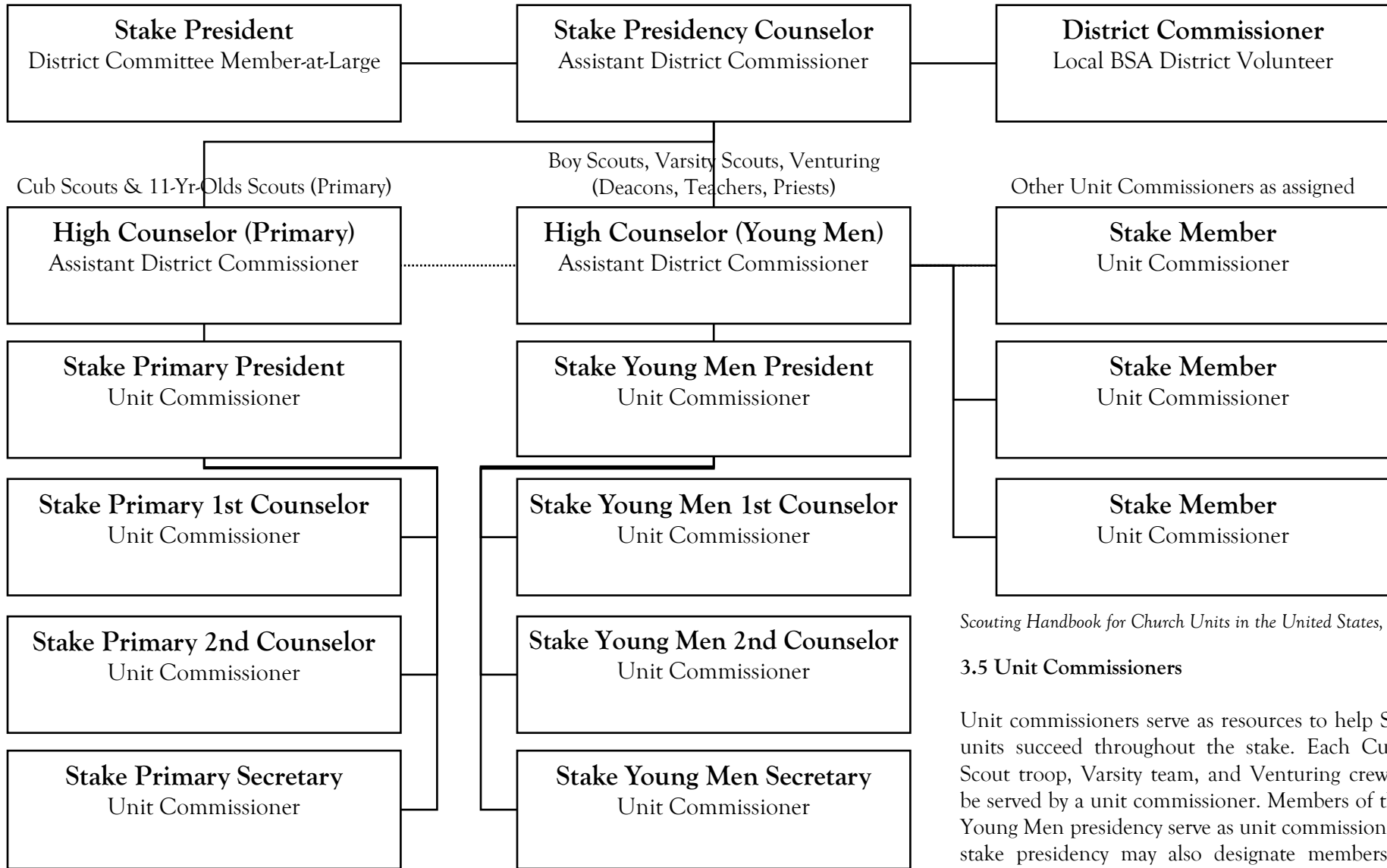




LDS Stake - BSA Commissioner Service Organization Chart

Typical Stake Organization according to *Scouting Handbook for Church Units in the United States*, pg. 2



Scouting Handbook for Church Units in the United States, pg. 2

3.5 Unit Commissioners

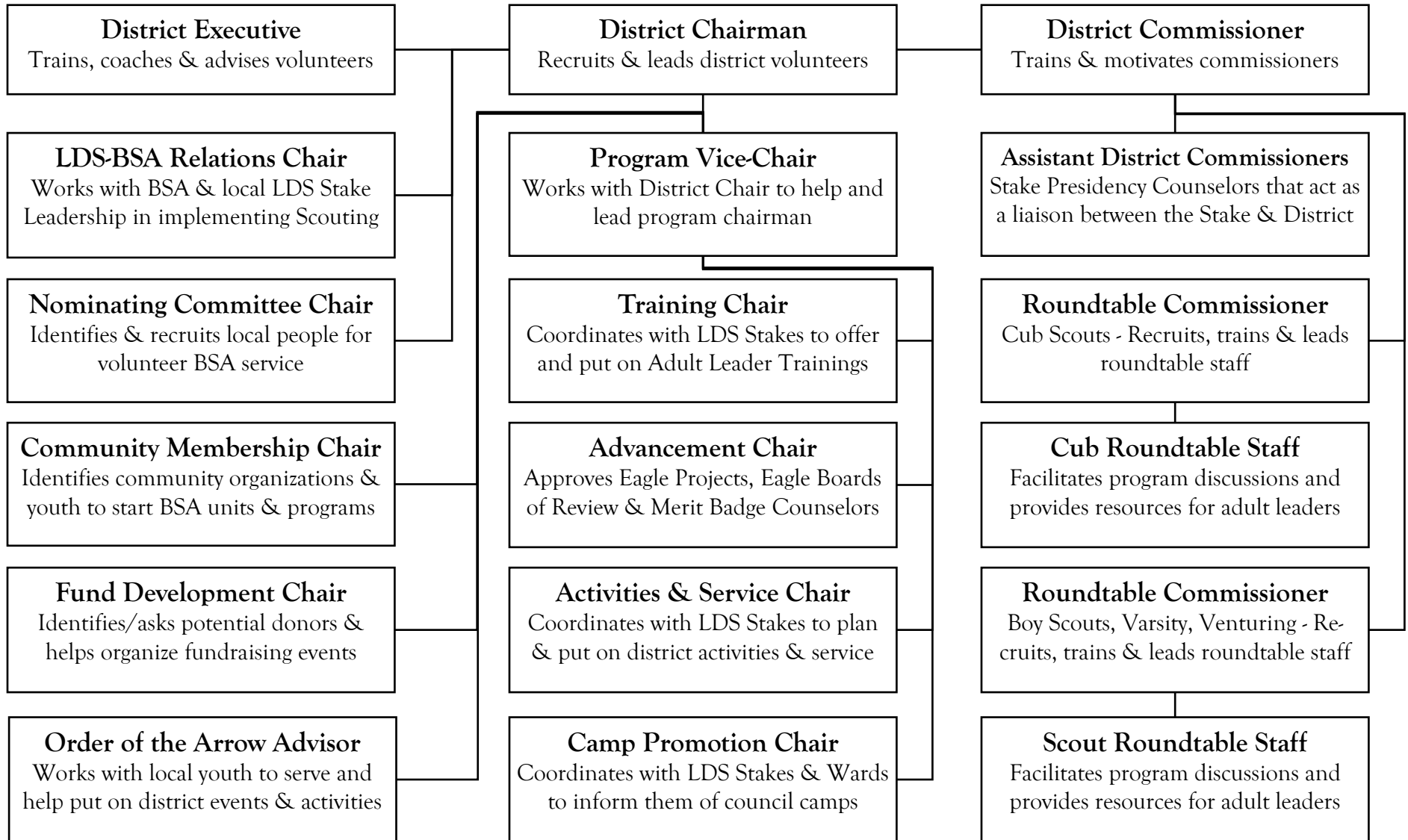
Unit commissioners serve as resources to help Scouting units succeed throughout the stake. Each Cub pack, Scout troop, Varsity team, and Venturing crew should be served by a unit commissioner. Members of the stake Young Men presidency serve as unit commissioners. The stake presidency may also designate members of the stake Primary presidency or other stake members as unit commissioners, as long as this assignment will not overburden these members.

The suggested BSA standard is that a unit commissioner should only have responsibility to visit no more than three Scouting units, i.e. Troop, Team, Crew.



LDS - BSA District Organization Chart

District Organization is based on the local needs of the wards and stakes. Volunteers serve on the district.



District supports LDS Stakes, Wards & Community Units.

Cub Scout Packs (Primary 8-10 year-olds) - Boy Scout Troops (11 year-olds, Deacons) - Varsity Scout Teams (Teachers) - Venturing Crews (Priests)